

The NEWS Building

3 | LONDON BRIDGE ST / SE1

Part 9th Floor

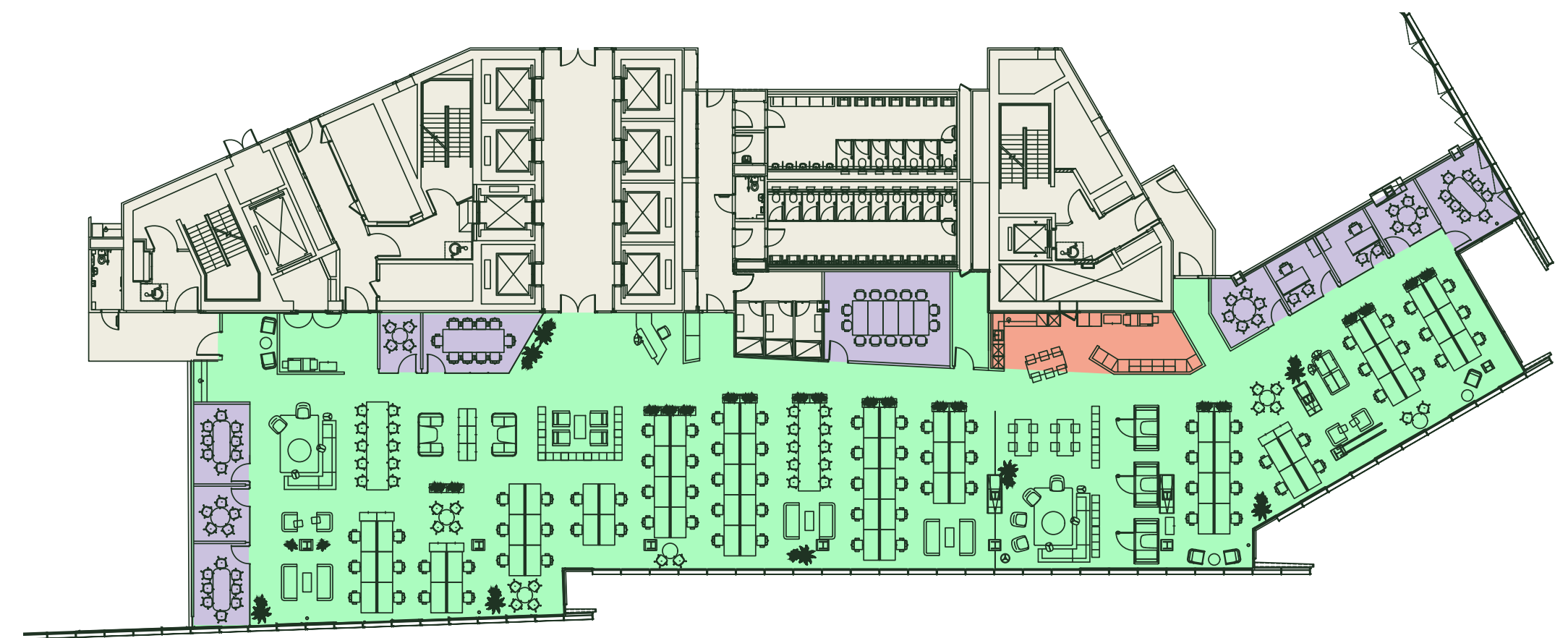
INDICATIVE LAYOUT 10,370 SQ FT (963.4 SQ M)

Workstations	78
Hotdesks	10
1 person offices	02
Boardroom	01
Meeting rooms	08
Collaboration zones	08
Phone booths	03
Reception	01
Kitchen / breakout	01

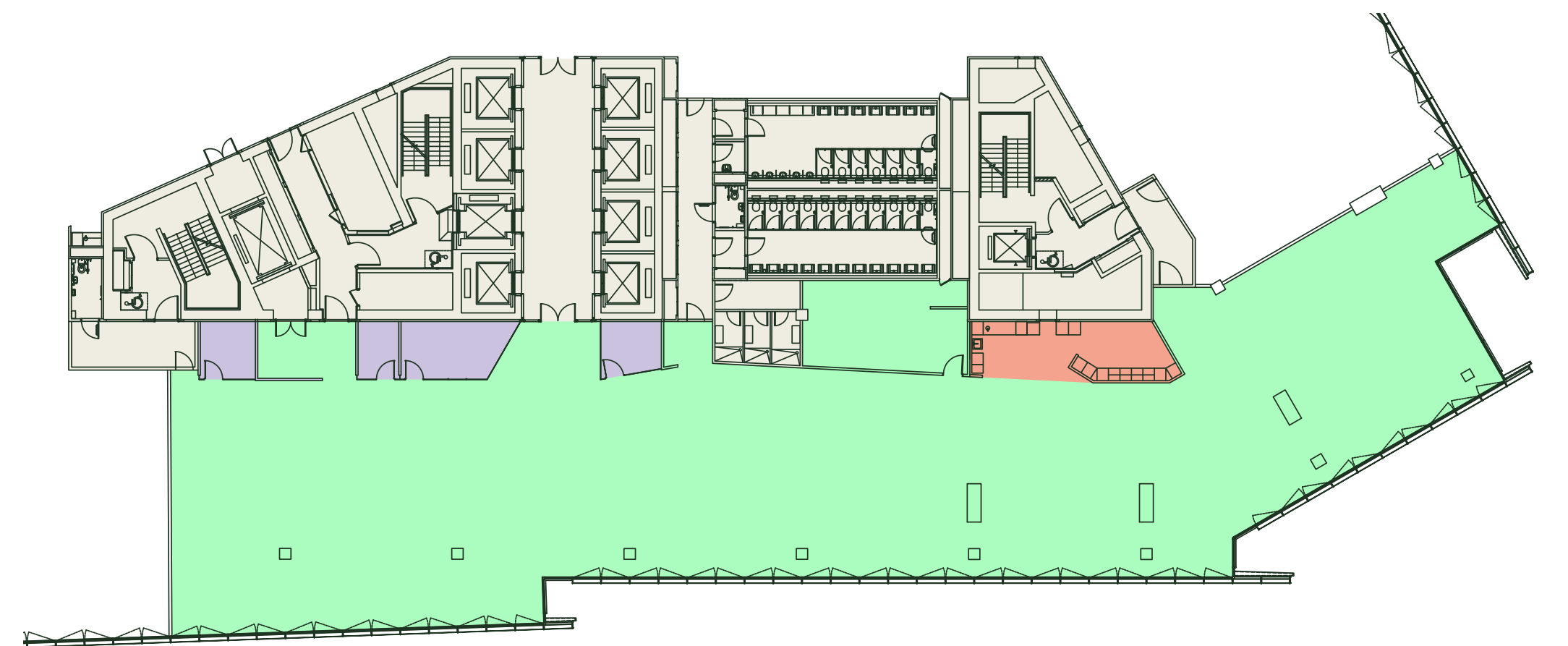
CURRENT LAYOUT 10,370 SQ FT (963.4 SQ M)

- Office
- Core
- Kitchen
- Meeting room / private office

 For indicative purposes only. Not to scale.



London Bridge Street



London Bridge Street