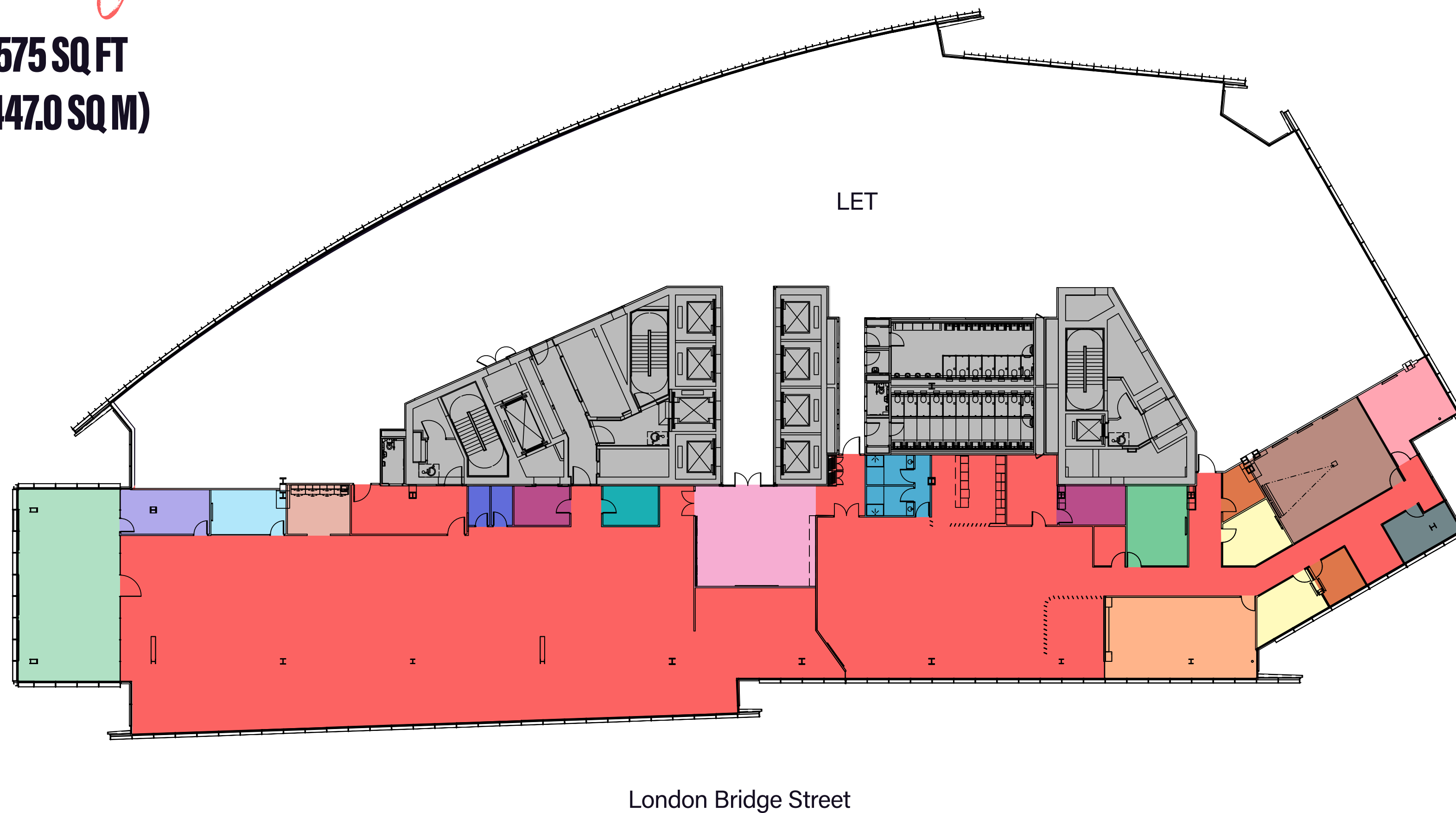


# The NEWS Building

4th floor

15,575 SQ FT  
(1,447.0 SQ M)



## OCCUPANCY

Reception	4 person meeting room	20 person boardroom	Printer room
Winter Garden	6 person meeting room	Large boardroom / presentation room	Server room
Executive office	8 person meeting room	Phone room	Storage
2 person meeting room	10 person meeting room	Tea Point	Showers



For indicative purposes only. Not to scale.

# The NEWS Building

4th floor

15,575 SQ FT  
(1,447.0 SQ M)



London Bridge Street

160 DESKS



160 workstations



9 breakout areas



12 hotdesks



2 kitchens



For indicative purposes only. Not to scale.