

# The NEWS Building

3 | LONDON  
BRIDGE  
ST / SE1



**9TH FLOOR  
OFFICE - UP TO  
30,941 SQ FT  
AVAILABLE**



External  
facade



# ICONIC SHARD QUARTER

## Overview

The News Building is an iconic building with views over the City skyline, positioned adjacent to London Bridge Station.

The available 9th floor provides up to 30,941 sq ft of enhanced CAT A+ office space boasting a high specification.

Main reception



Level 9 views





ELEVATED  
POINT OF  
VIEW

Level 17 views



24 dedicated  
cycle spaces



BREEAM rating  
'Excellent'



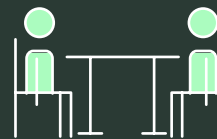
EPC B



8 x 21 person  
passenger lifts



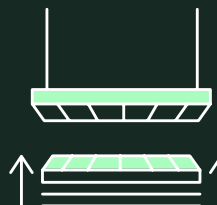
17th floor event space  
with spectacular views  
(by separate arrangement)



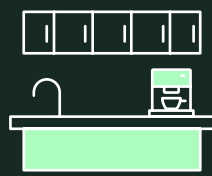
12 meeting  
rooms in situ



4 Pipe fan coil  
air conditioning



Metal tiled suspended  
ceiling & fully accessible  
raised floor



Two new fitted  
kitchens in situ



Winter garden

Level 17 event space



Coffee station

Amenities

The building features all of the amenities expected of a first-class workspace, along with excellent environmental credentials. On the 17th floor is a bookable event space with stunning panoramic views and a new coffee station has opened in the main reception.

A loyalty card scheme is available to tenants offering exclusive offers and discounts at many nearby retailers.



Indicative fit-out CGI





*Indicative fit-out CGI*



# FLEXIBLE FLOORPLATE

## The Space

The 9th floor has an existing fit-out suitable for a range of occupiers. It features open plan workspace along with meeting rooms and private offices.

The space is further enhanced with demised male and female WCs and showers.



*Cat A+ 9th floor*



*Open floor kitchen*

*Iconic views*





# CAT A+ SPACE

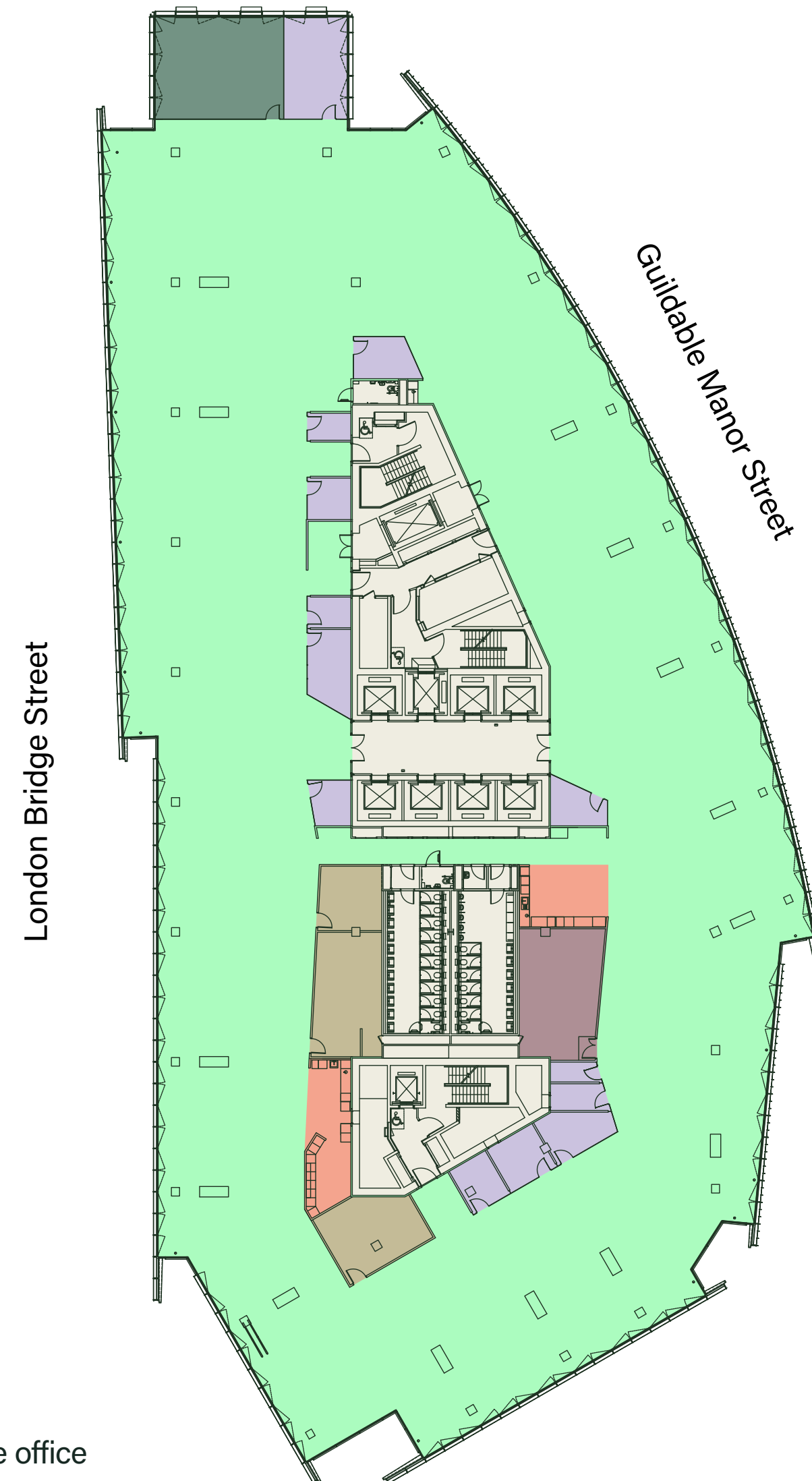
## The space

The 9th floor is available in Cat A+ condition and offers a total area of 30,941 sq ft. It is designed to accommodate a maximum density of up to 362 desks. The floor can be divided into two equal office spaces of 15,000 sq ft each, with additional split configurations available to suit different requirements.

9th floor

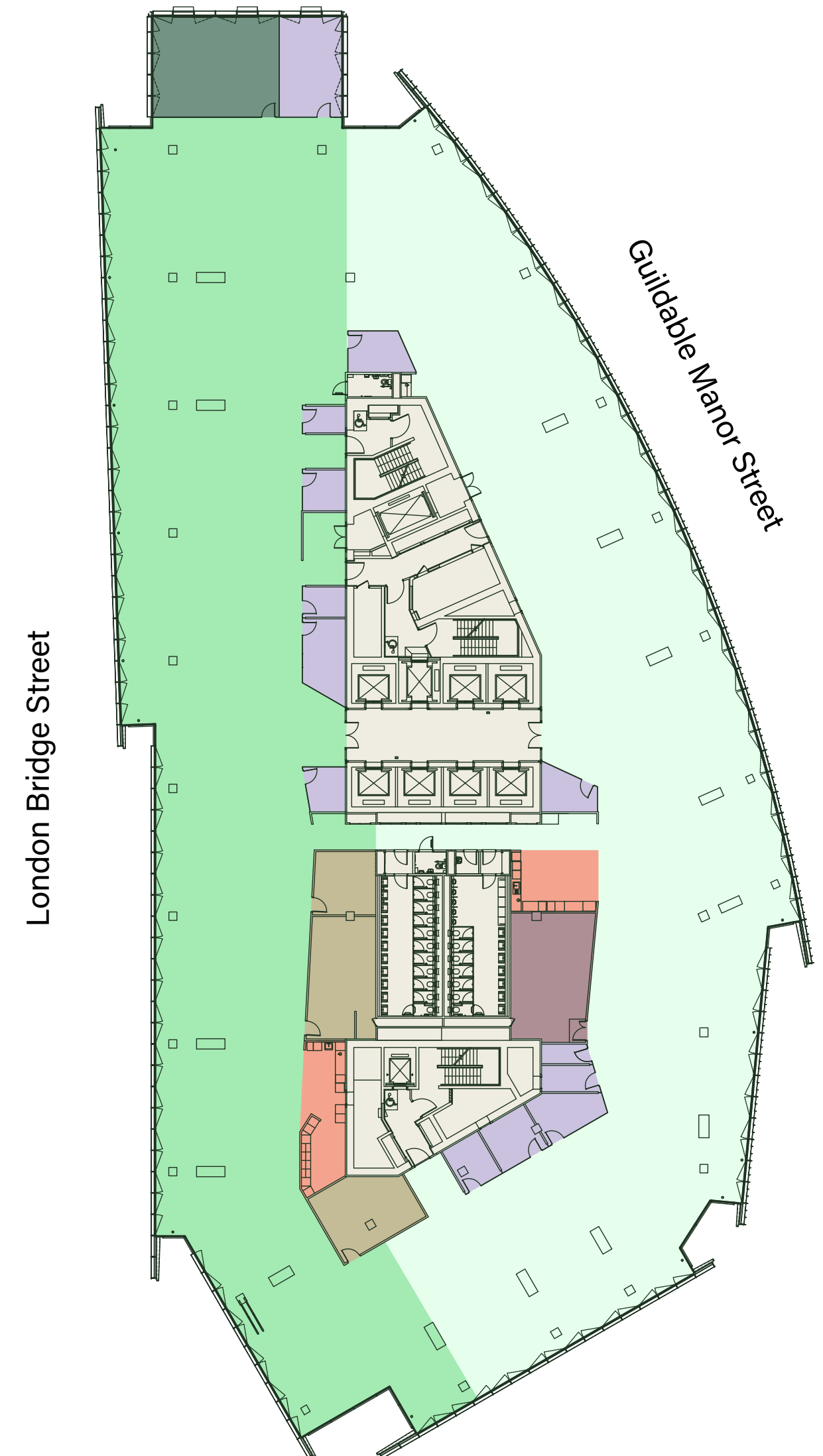
30,941 SQ FT  
(2,874.5 SQ M)

- Office
- Core
- Kitchen
- Meeting room / private office
- Winter garden
- Comms room
- Storage



Split plan

A c.15,000 SQ FT  
B c.15,000 SQ FT



For indicative purposes only. Not to scale.







## Local area

The surrounding area features a host of exciting amenities, all on the doorstep. The culture on the South Bank, artisan food in Borough Market, and places to meet in the City.

Borough Market is a moments walk away, sitting alongside Southwark Cathedral which leads the way to the landmarks along the South Bank.



## Tower Bridge



# VIBRANT DESTINATION





Bars & Restaurants

- 1 London Grind
- 2 Padella
- 3 Roast
- 4 Fish!
- 5 The Ivy
- 6 The Coal Shed
- 7 Aqua Shard
- 8 Oblix
- 9 Brindisa
- 10 Elliot's
- 11 Bar 31
- 12 Wright's

Hotels

- 1 Shangri-La hotel
- 2 The Tower Hotel
- 3 CitizenM
- 4 London Bridge Hotel
- 5 Novotel
- 6 Hilton
- 7 Hoxton Hotel
- 8 The Dixon
- 9 Lalit
- 10 Native Bankside
- 11 Ibis Styles
- 12 Urban Stay

Fitness

- 1 Fitness First
- 2 Nuffield Health
- 3 Third Space
- 4 No.1 Fitness
- 5 Gymbox
- 6 The Secret Boxing Gym
- 7 The Fitting Rooms
- 8 The Bridge
- 9 The Hidden Gym
- 10 PureGym
- 11 King's Sport
- 12 Buzz Gym

Culture

- 1 Southwark Cathedral
- 2 Borough Market
- 3 Tate Modern
- 4 The Globe Theatre
- 5 Tower of London
- 6 Bridge Theatre
- 7 Greenwood Theatre
- 8 Golden Hinde
- 9 Borough Yards
- 10 The Monument
- 11 Liberty of Southwark
- 12 Fashion & Textile Museum

<1

MINUTE WALK

London Bridge



7

MINUTE WALK

Bank

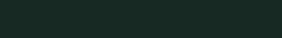
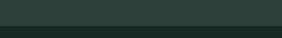


# EXCEPTIONAL CONNECTIONS

7

MINUTES

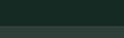
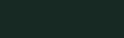
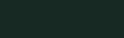
Liverpool Street



9

MINUTE WALK

Waterloo



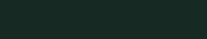
## Connectivity

The News Building is well connected, positioned above London Bridge station. The building is a short walk from the City and has easy access to transport links across London.

12

MINUTES

Canary Wharf



38

MINUTES

Gatwick Airport



Journey times taken from the building. Source: TfL.





# FURTHER INFORMATION



# THENEWSBUILDING.CO.UK

**Viewings**  
Strictly through joint agents:



**Simon Crotty**  
07826 947 267  
simon.crotty@jll.com

**Hugh Tayler**  
07801 959 513  
hugh.tayler@jll.com



**Lizzie Boswell**  
07570 204 519  
lizzie.boswell@cbre.com

**Ben Atwell**  
07490 363 111  
ben.atwell@cbre.com

This information has been obtained from sources believed reliable but been verified for accuracy or completeness. You should conduct a careful, independent investigation of the property and verify all information. Any reliance on this information is solely at your own risk. JLL, CBRE and their logos are service marks of JLL and CBRE. All other marks displayed on this document are the property of their respective owners and the use of such logos does not imply any affiliation with or endorsement of JLL and CBRE. Photos herein are the property of their respective owners. Use of these images without the express written consent of the owner is prohibited. May 2025.

