

THE NEWS BUILDING

UP TO 30,941 SQ FT AVAILABLE
ON A SINGLE FLOOR.

3 | LONDON
BRIDGE
ST / SE1



THE BUILDING

A NEW POINT OF VIEW

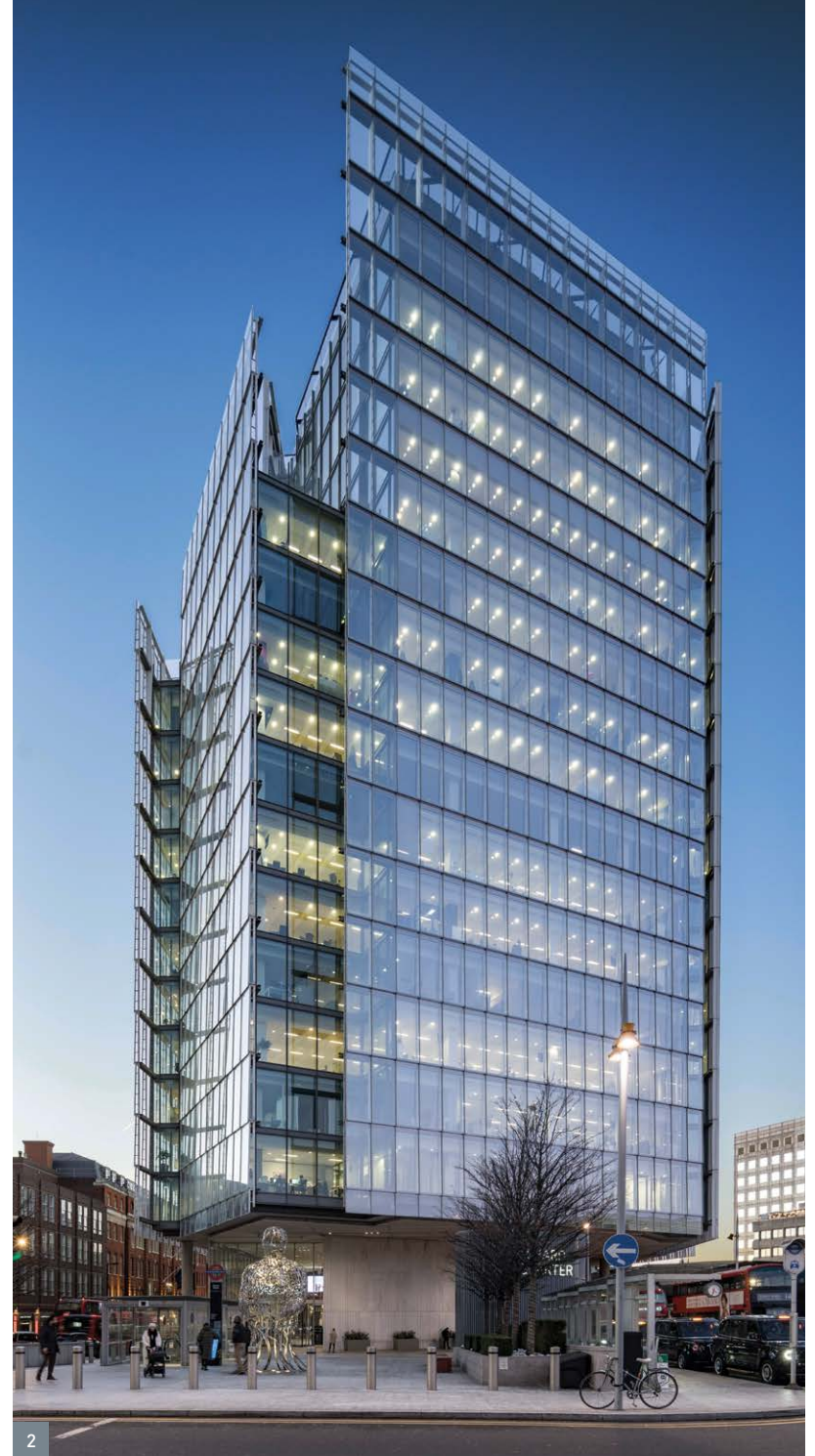
Stunning views of the River Thames and City landmarks compliment best-in-class workspace at The News Building, an iconic London Bridge building.



READ ALL ABOUT IT

The News Building offers 15,000 - 30,941 sq ft of enhanced 9th floor CAT A+ office space on top of London Bridge station.

- 1 The News Building main entrance reception
- 2 Exterior on London Bridge Street
- 3 3 London Bridge Street reception



MAKING HEADLINES

A high specification fully refurbished office space, with all of the amenities expected of a first class workspace.

The floor has been refurbished to a Cat A standard, and finished with 2 kitchens providing the ideal environment in which to work.



Quality open plan CAT A+ office space on the 9th floor overlooking the River Thames



BREEAM rating 'Excellent'



Large 17th floor event space with spectacular views (available by separate arrangement)



EPC B



12 meeting rooms



2 phone booths



LED lighting



Winter garden



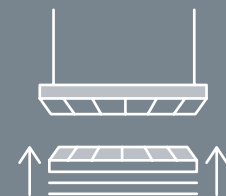
2 new kitchens



8 x 21 person passenger lifts



4 pipe fan coil air conditioning



Metal tiled suspended ceiling and fully accessible raised floor

CREATE YOUR OWN NARRATIVE



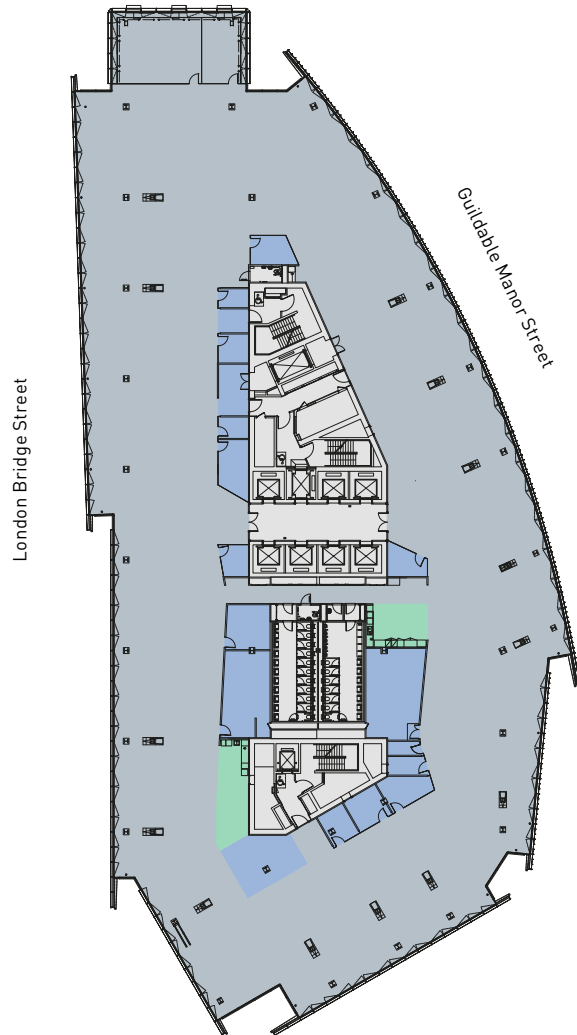
9TH FLOOR FIT OUT CGI

9TH FLOOR FIT OUT CGI

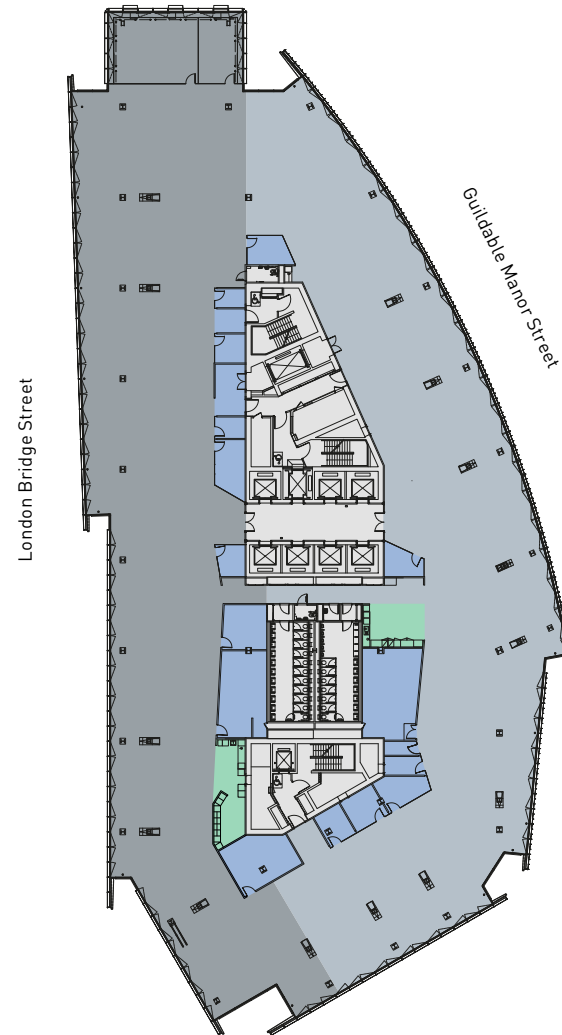


FINER DETAILS

9th Floor Plan
30,941 sq ft (2,875 sq m)



9th Floor Split Plan
30,941 sq ft (2,875 sq m)



- Split A
approx. 15,000 sq ft
- Split B
approx. 15,000 sq ft
- Core
- Offices & Meeting rooms
- Kitchen areas

Plans not to scale.
Indicative only.

LOCATION

TIME TO MAKE A STATEMENT

The surrounding area features a host of exciting amenities, all on the doorstep. The culture on the South Bank, artisan food in Borough Market, and places to meet in the City.

- 1 Hawksmoor
- 2 Borough Market
- 3 Southwark Cathedral
- 4 Casa de Frango
- 5 Vinegar Yard
- 6 Padella

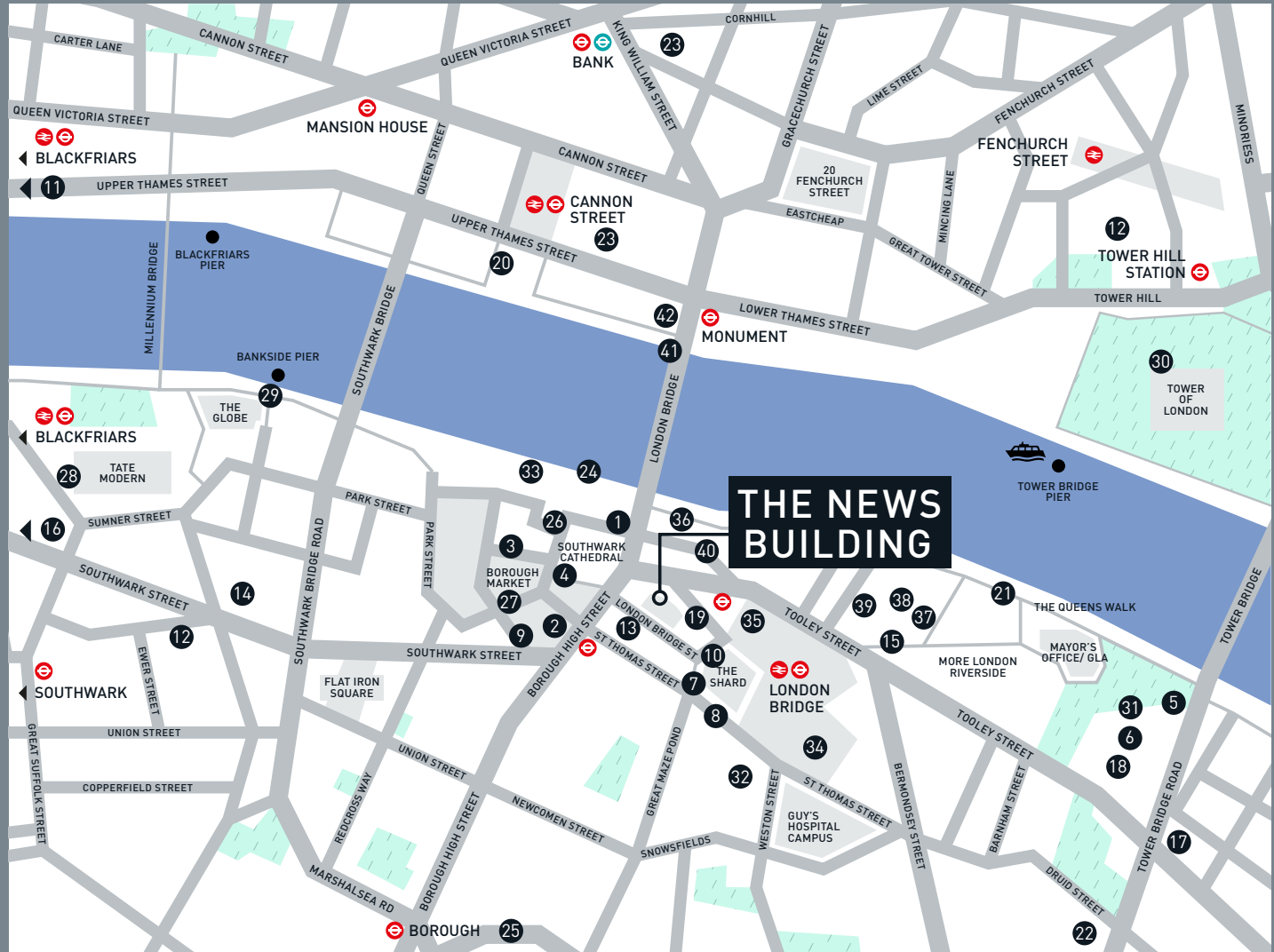


Borough Market is a moments walk away, sitting alongside Southwark Cathedral which leads the way to the landmarks along the South Bank.

A short walk across London Bridge and you're amongst the City landmarks, along with the bustling amenities it has to offer.

LOCAL FEATURES

It's home to some of the biggest names in business and is the centre point of London's financial, insurance, fintech and media workforces.



Zoopa Ogilvy KANTAR MEDIA

pwc itv Telstra

ED&F MAN Red Bull EY

OmnicomGroup DUFF&PHELPS News

Transport for London NHS Allies and Morrison

BARS & RESTAURANTS

- 1 London Grind
- 2 Padella
- 3 Roast
- 4 Fish!
- 5 The Ivy
- 6 The Coal Shed
- 7 Aqua Shard
- 8 Oblix
- 9 Brindisa

HOTELS

- 10 Shangri-La hotel
- 11 Mondrian London
- 12 CitizenM
- 13 London Bridge Hotel
- 14 Novotel
- 15 Hilton
- 16 Hoxton Hotel
- 17 The Dixon
- 18 Lalit

FITNESS

- 19 Fitness First
- 20 Nuffield Health
- City Fitness
- 21 Third Space
- 22 No.1 Fitness
- 23 Gymbox
- 24 The Secret
- Boxing Gym
- 25 Pure Gym

CULTURE

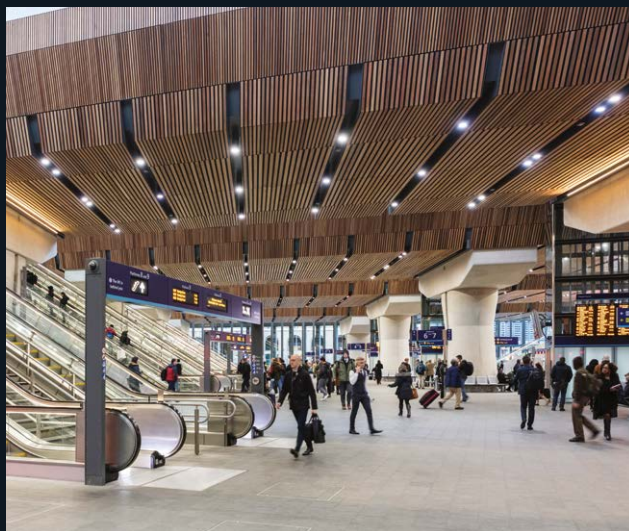
- 26 Southwark Cathedral
- 27 Borough Market
- 28 Tate Modern
- 29 The Globe Theatre
- 30 Tower of London
- 31 Bridge Theatre
- 32 Greenwood Theatre
- 33 Golden Hinde

RETAIL

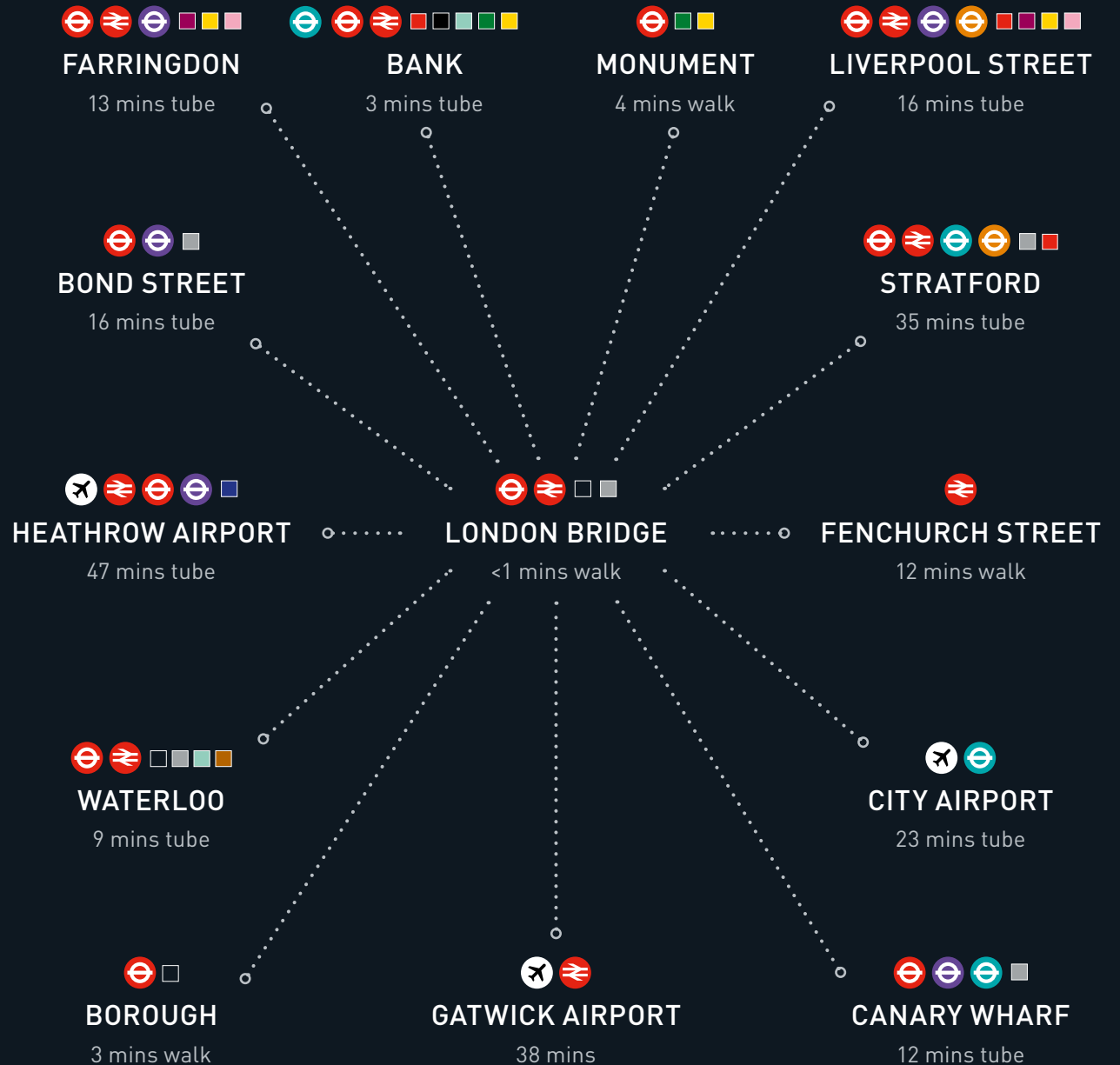
- 34 Oliver Bonas
- 35 Ted Baker
- 36 Evans Cycles
- 37 M&S
- 38 Next
- 39 Charles Tyrwhitt
- 40 On Your Bike
- 41 Waitrose
- 42 Snow & Rock

AT THE CENTRE OF THE STORY

Positioned adjacent to London Bridge, one of London's biggest and key transport hubs. Underground trains via the Jubilee and Northern lines provide frequent services across the City and beyond, with National Rail providing links further afield.



The News Building



Travel times from London Bridge station. Source: TfL

THE SMALL PRINT

To find out more and arrange a viewing, please contact the joint sole letting agents below.



SIMON CROTTY
07826 947 267
simon.crotty@jll.com

HUGH TAYLER
07801 959 513
hugh.tayler@jll.com



ALICE ALIAS
07552 882 971
alice.alias@cbre.com

MARK SLIM
07887 692 395
mark.slim@cbre.com

BEN ATWELL
07490 363 111
ben.atwell@cbre.com

THENEWSBUILDING.CO.UK

This information has been obtained from sources believed reliable but been verified for accuracy or completeness. You should conduct a careful, independent investigation of the property and verify all information. Any reliance on this information is solely at your own risk. JLL, CBRE and their logos are service marks of JLL and CBRE. All other marks displayed on this document are the property of their respective owners and the use of such logos does not imply any affiliation with or endorsement of JLL and CBRE. Photos herein are the property of their respective owners. Use of these images without the express written consent of the owner is prohibited. January 2024.

