

*The*  
**NEWS**  
*Building*

**3** | LONDON  
BRIDGE  
ST / SE1



**PART  
9TH FLOOR  
OFFICE -  
10,370 SQ FT**

External facade



# ICONIC SHARD QUARTER

## Overview

The News Building is an iconic building with views over the City skyline, positioned adjacent to London Bridge Station.

The available part 9th floor provides up to 10,370 sq ft of enhanced CAT A+ office space boasting a high specification.

Tenant reception

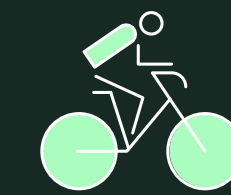


Level 17 views

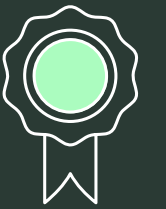


# ELEVATED POINT OF VIEW

Level 17 views



8 dedicated cycle spaces



BREEAM rating 'Excellent'



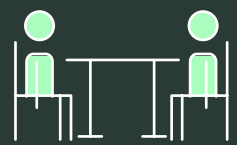
EPC B



8 x 21 person passenger lifts



17th floor event space with spectacular views (by separate arrangement)



4 meeting rooms in situ



4 Pipe fan coil air conditioning



Metal tiled suspended ceiling & fully accessible raised floor



New fitted kitchen in situ



Winter garden

Level 17 event space



Coffee station

## Amenities

The building features all of the amenities expected of a first-class workspace, along with excellent environmental credentials. On the 17th floor is a bookable event space with stunning panoramic views and a new coffee station has opened in the main reception.

A loyalty card scheme is available to tenants offering exclusive offers and discounts at many nearby retailers.

# Indicative fit-out CGI





Cat A+ 9th floor

# FLEXIBLE FLOORPLATE

## The Space

The part 9th floor has an existing fit-out suitable for a range of occupiers. It features open plan workspace along with meeting rooms and private offices.

The space is further enhanced with demised male and female WCs and showers.



Level 9 Views

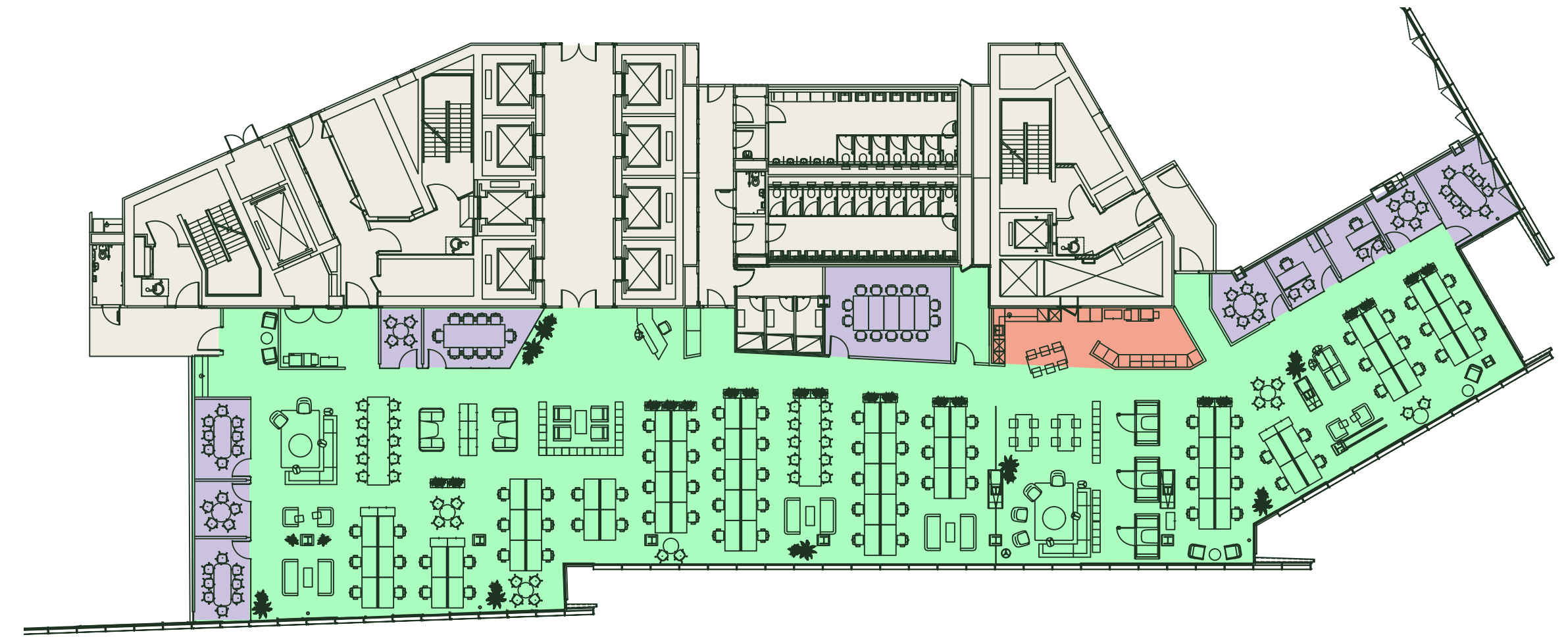


# CAT A+ SPACE

## Part 9th Floor

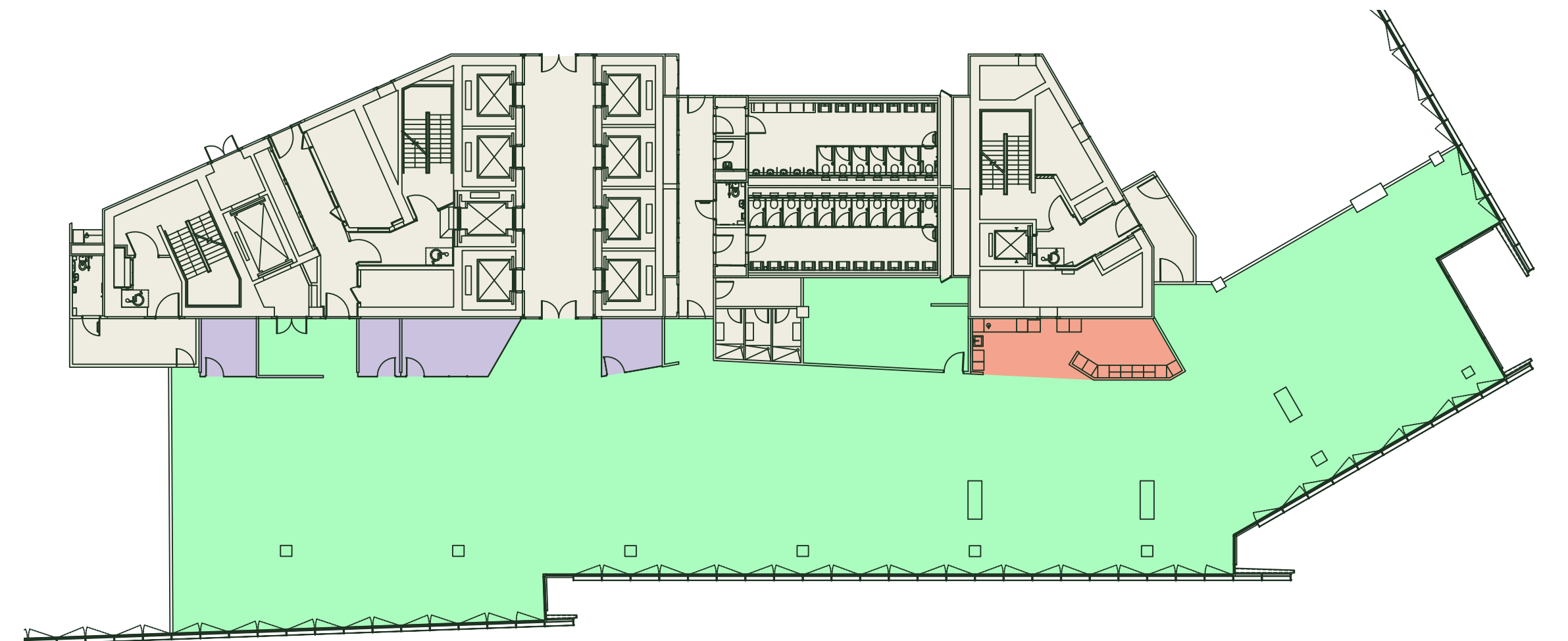
### INDICATIVE LAYOUT 10,370 SQ FT (963.4 SQ M)

Workstations	78
Hotdesks	10
1 person offices	02
Boardroom	01
Meeting rooms	08
Collaboration zones	08
Phone booths	03
Reception	01
Kitchen / breakout	01



London Bridge Street

### CURRENT LAYOUT 10,370 SQ FT (963.4 SQ M)



London Bridge Street

- Office
- Core
- Kitchen
- Meeting room / private office



# VIBRANT DESTINATION

## Local area

The surrounding area features a host of exciting amenities, all on the doorstep. The culture on the South Bank, artisan food in Borough Market, and places to meet in the City.

Borough Market is a moments walk away, sitting alongside Southwark Cathedral which leads the way to the landmarks along the South Bank.



## Tower Bridge





**Bars & Restaurants**

- 1 London Grind
- 2 Padella
- 3 Roast
- 4 Fish!
- 5 The Ivy
- 6 The Coal Shed
- 7 Aqua Shard
- 8 Oblix
- 9 Brindisa
- 10 Elliot's
- 11 Bar 31
- 12 Wright's

**Hotels**

- 1 Shangri-La hotel
- 2 The Tower Hotel
- 3 CitizenM
- 4 London Bridge Hotel
- 5 Novotel
- 6 Hilton
- 7 Hoxton Hotel
- 8 The Dixon
- 9 Lalit
- 10 Native Bankside
- 11 Ibis Styles
- 12 Urban Stay

**Fitness**

- 1 Fitness First
- 2 Nuffield Health
- 3 Third Space
- 4 No.1 Fitness
- 5 Gymbox
- 6 The Secret Boxing Gym
- 7 The Fitting Rooms
- 8 The Bridge
- 9 The Hidden Gym
- 10 PureGym
- 11 King's Sport
- 12 Buzz Gym

**Culture**

- 1 Southwark Cathedral
- 2 Borough Market
- 3 Tate Modern
- 4 The Globe Theatre
- 5 Tower of London
- 6 Bridge Theatre
- 7 Greenwood Theatre
- 8 Golden Hinde
- 9 Borough Yards
- 10 The Monument
- 11 Liberty of Southwark
- 12 Fashion & Textile Museum

**<1**  
MINUTE WALK



**7**  
MINUTE WALK



**7**  
MINUTES



**9**  
MINUTE WALK



**12**  
MINUTES



**38**  
MINUTES



# EXCEPTIONAL CONNECTIONS

## Connectivity

The News Building is well connected, positioned above London Bridge station. The building is a short walk from the City and has easy access to transport links across London.

Journey times taken from the building. Source: TfL.



# FURTHER INFORMATION



## THE NEWS BUILDING.CO.UK

### Viewings

Strictly through joint agents:



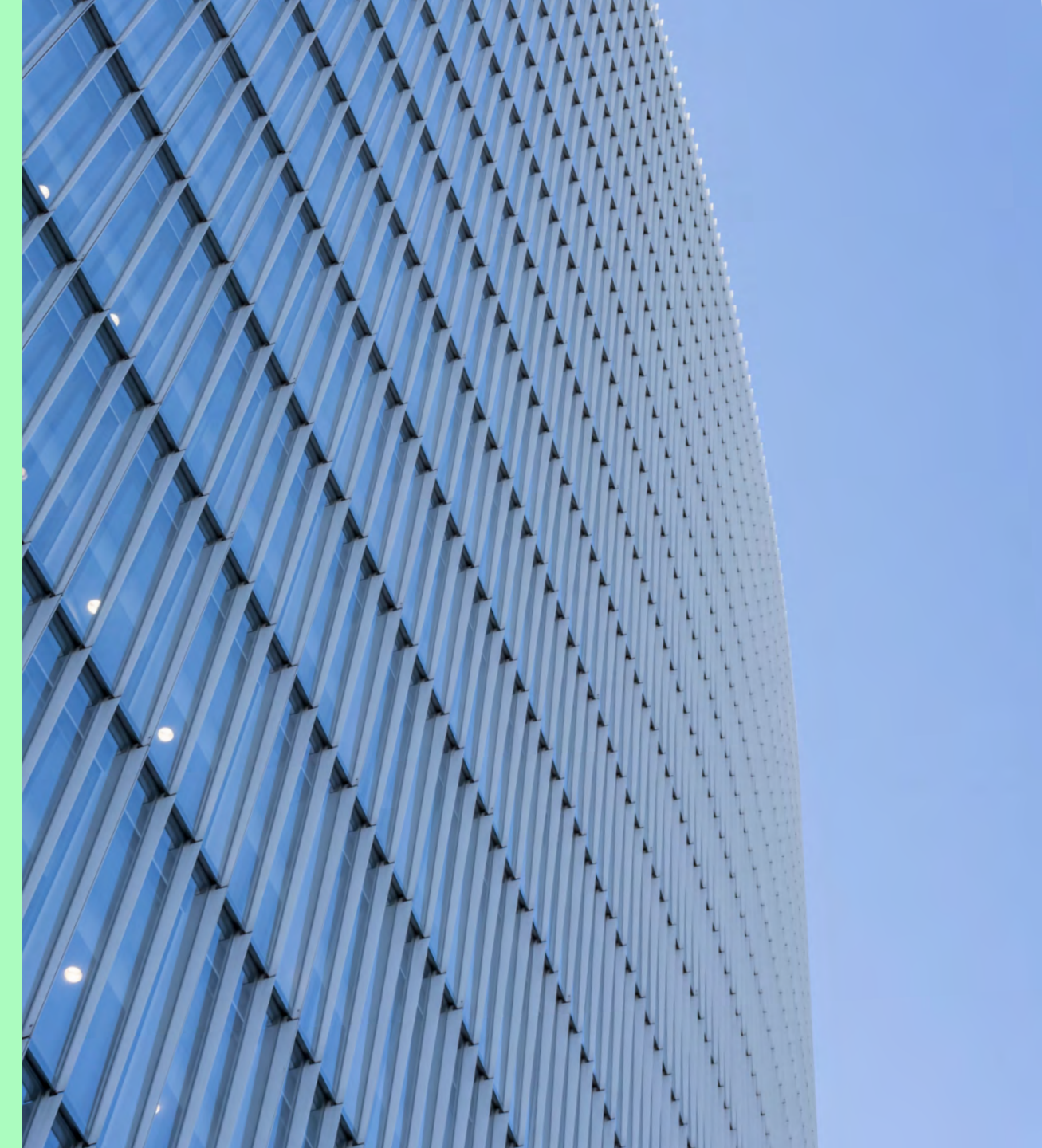
**Simon Crotty**  
07826 947 267  
simon.crotty@jll.com

**Hugh Tayler**  
07801 959 513  
hugh.tayler@jll.com



**Lizzie Boswell**  
07570 204 519  
lizzie.boswell@cbre.com

**Ben Atwell**  
07490 363 111  
ben.atwell@cbre.com



This information has been obtained from sources believed reliable but been verified for accuracy or completeness. You should conduct a careful, independent investigation of the property and verify all information. Any reliance on this information is solely at your own risk. JLL, CBRE and their logos are service marks of JLL and CBRE. All other marks displayed on this document are the property of their respective owners and the use of such logos does not imply any affiliation with or endorsement of JLL and CBRE. Photos herein are the property of their respective owners. Use of these images without the express written consent of the owner is prohibited. March 2026.